

# HOME & DESIGN

Volume 2 No 5  
₹250

A Times of India publication

# TRENDS<sup>®</sup>



R.N.I. MAHENG/2013/50949



MW88141001



ON: MY BESTSELLING DESIGNS

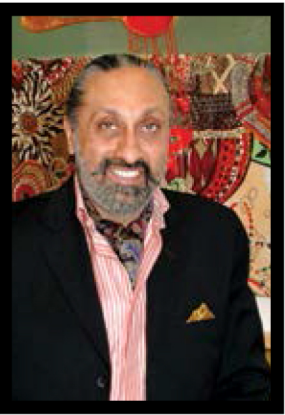


**GUNJAN GUPTA**  
**WRAP**

The **Gadda Cycle Throne Chair** is a humorous symbiosis of bicycle seats as well as the bales of fabric commonly transported by a bicycle. The design idea of a chair as a 'static bicycle' is reiterated through the bold use of recycled form and a play on function. The bicycle is also one of the most commonly used modes of transport in the developing world, and this instantly recognisable piece is popular because of how it celebrates the simplicity and economy of its design.

**ASIM MERCHANT**  
**RED BLUE & YELLOW**

The **Leaf Chaise** is our most popular design. Forms and shapes of nature create comfortable surfaces and silhouettes. This observation of nature is revealed in the shape of the sculptural Leaf Chaise, displaying its organic design integrating the branches and veins of a leaf, thereby creating an ergonomic shape with a contemporary twist. Carved out of solid timber, the design cradles the body making it very comfortable to sit in.



**MANJEET BULLAR**  
**MANJEET BULLAR DESIGN**



The **Wing Chair** is our most popular design. This is because it provides a continuous design challenge and also presents an opportunity to create individual statement pieces. It is a gold dusted, leather-backed chair.



**ROLLY & RAJEETA GUPTA**  
**HOUSE OF RARO**

The **Armand Lounge Chair and Ottoman** is one of our most appreciated designs. Most of our projects have this as a part of the design scheme. Firstly, it's an originally designed chair with a heavy French Art Deco influence. It has been crafted with beautiful materials, such as ebony veneers, silver inlays, luxe leather. Adding to this is a detailed Art Deco onyx plate, which has a Erte's illustration beautifully inlaid with semiprecious stones. This rare design also has stylish proportions that contribute to its strong individualistic character.







## BOBBY AGGARWAL PORTSIDE CAFE

The **Case Study** from our Art Deco inspired Yacht Club collection is by far the best-selling furniture design from Portside Cafe. I guess one of the main reasons why it sells well is its utter simplicity and clean lines when it's closed and the sudden burst of colour inside when

opened, delighting the inner child in everyone.

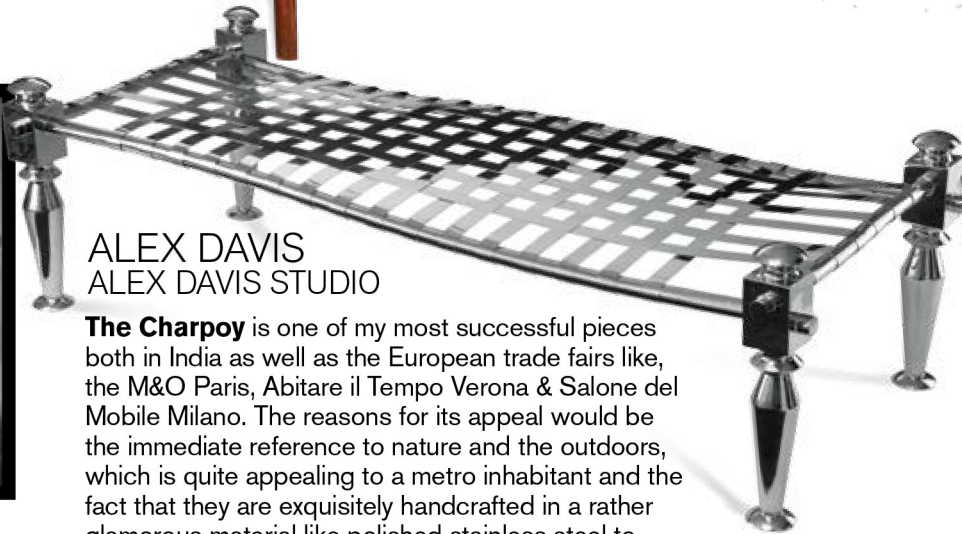
Also, the details on the lid where you

can put your personal stationery and pens etc. makes the piece highly personal. Other features like 'lift' and 'slide' functions of the base reveals space to store your electronic gadgets and diaries. Really a compact writing bureau if there is one.



## ALEX DAVIS ALEX DAVIS STUDIO

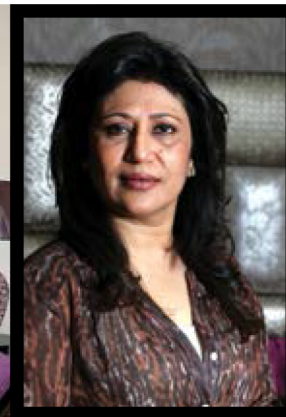
**The Charpoy** is one of my most successful pieces both in India as well as the European trade fairs like, the M&O Paris, Abitare il Tempo Verona & Salone del Mobile Milano. The reasons for its appeal would be the immediate reference to nature and the outdoors, which is quite appealing to a metro inhabitant and the fact that they are exquisitely handcrafted in a rather glamorous material like polished stainless steel to liven up any space.



ALEX DAVIS, HONEY JOLLY X2, BOBBY AGGARWAL X3

## HONEY JOLLY HOME ET TU

**The Maximalise Luxury Living Collection** brings in the desired charm and charisma to any living room. According to me, the reason for its popularity is its simple yet elegant design and the use of two different fabrics like leatherite and velvet, which give it a unique Et Tu touch. The fact that the colours can be altered to suit any kind of look adds to its universal appeal with clients.



- Compiled by Dushyant Shekhawat

